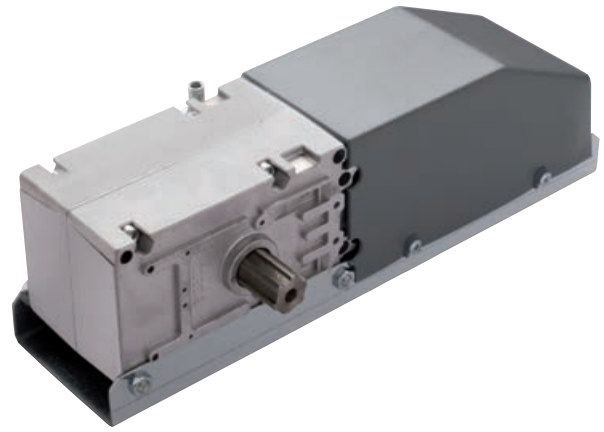


LIVI 550PL

Automations for industrial folding doors



NET230N 230V a.c. operators without control board

COD.	Art.			OTHER CHARACTERISTICS
623400*	550PL/F	• •		Limit switches, unlocking device by cable 4 mt. long
623410*	550PL	• •		Unlocking device by cable 4 mt. long
623411	550PLEN	• •	•	Encoder, unlocking device by cable 4 mt. long

Control board to complete the installation: control board cod. 677610 art. NET230N/C (with box)

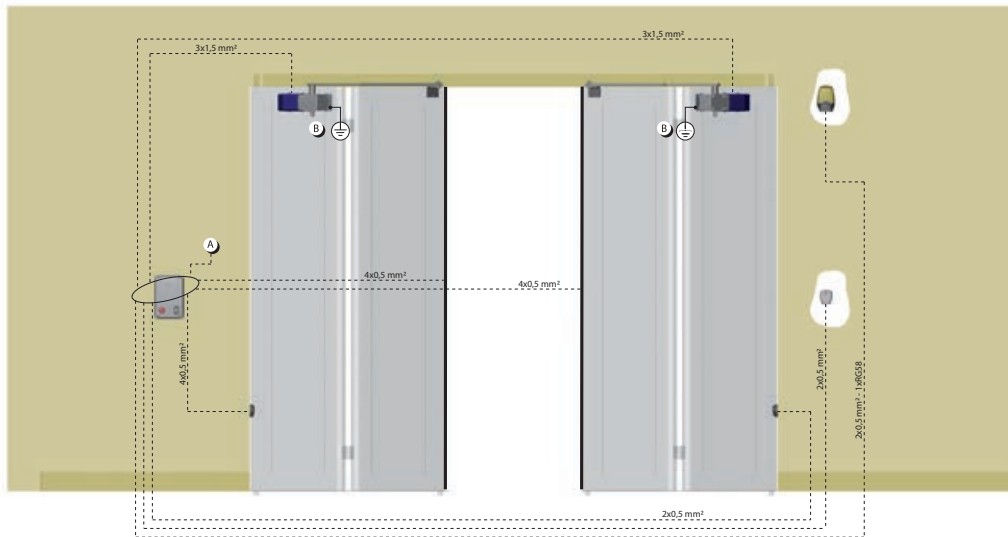
* In order to respect the limit of impact forces foreseen by EN 13241-1, you must use the external safety devices in compliance with EN 12978.

NET24N 24V d.c. operators without control board

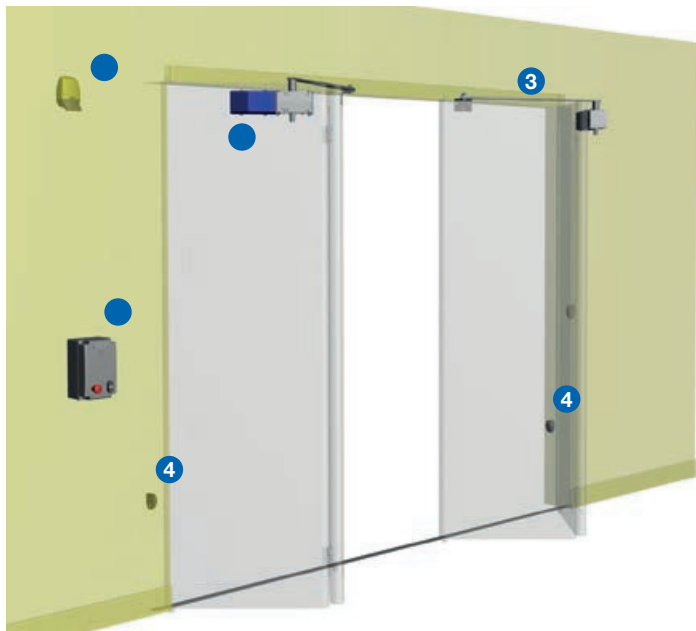
COD.	Art.			OTHER CHARACTERISTICS
623420	550/24PL/F	• • •		Limit switches, unlocking device by cable 4 mt. long
623421	550/24EN	• • •	•	Encoder, unlocking device by cable 4 mt. long

Control board to complete the installation: control board cod. 678261 art. NET24N/C (with box)

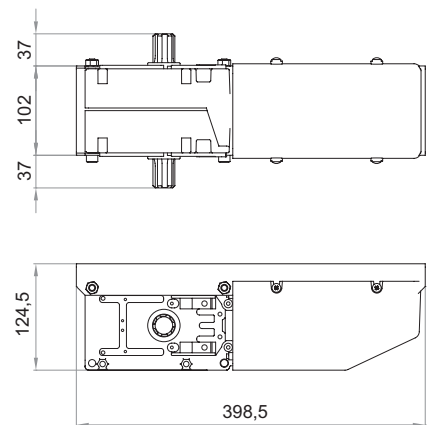
TECHNICAL INFO	550PL/F - 550PL 550PLEN	550/24PL/F 550/24EN
Motor power supply (V)	230 AC ± 10 % (50/60 Hz)	24 DC
Maximum power absorption (W)	300	80
Max thrust (N)	295	180
Duty cycle (cycles/hours)	22 - 28 (vers. 550PL/F - 550PLEN)	60
N. max cycles in 24h.	260	300
Built-in capacitor (µF)	8	\
Operating temperature (°C)	-20 ÷ 50	-20 ÷ 50
Motor thermal protection (°C)	150	\
90° Opening time (s)	18	16
Weight with packing (Kg)	6	6
Protection degree	IP44	IP44



EXAMPLE OF A TYPICAL INSTALLATION



DIMENSIONS



INDUSTRIAL SECTIONAL AND FOLDING DOORS

1




Cod. 623411
Art. 550PLEN
Operator for industrial folding doors


2



Cod. 677610
Art. NET230N/C
Universal digital control board for 1 or 2 operators, 230V, with or without magnetic encoder (with box)



5



Cod. 679180
Art. 100GP
Buttons wired cover

3



Cod. 629190
Art. 560BT
Galvanized steel telescopic arm, reinforced, with splined bushing

4



Cod. 662030
Art. 104LUX
Pair of adjustable (15°) surface mounted photocells

6



Cod. 661062
Art. LED230AI
Led flashing light 230V with built-in antenna 433Mhz

7



Cod. 668010
Art. 127
Warning sign

SPECIFIC ACCESSORIES



Cod. 629190
Art. 560BT
Galvanized steel telescopic arm,
reinforced, with splined bushing



Cod. 639480
Art. LATOM
Unlocking handle



Cod. 639111
Art. 560F - 960F
Limit switches



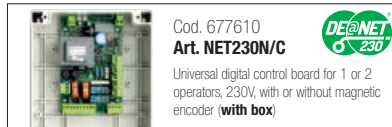
Cod. 639540
Art. 550PL/SF
Unlocking device by cable.
**To be used with LATOM
or BLINDOS**

OTHER ACCESSORIES



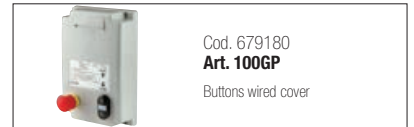
Cod. 678261
Art. NET24N/C

Universal digital control board for 1 or 2 operators, 24V, with or without magnetic encoder **(with box)**



Cod. 677610
Art. NET230N/C

Universal digital control board for 1 or 2 operators, 230V, with or without magnetic encoder **(with box)**



Cod. 679180
Art. 100GP

Buttons wired cover



Cod. 661082
Art. LED24AI

Led flashing light 24V with built-in antenna 433Mhz



Cod. 661062
Art. LED230AI

Led flashing light 230V with built-in antenna 433Mhz



Cod. 672580
Art. TR2

Remote control

Black version art. TR2N also available (page 118)



Cod. 672590
Art. TR4

Remote control

Black version art. TR4N also available (page 118)



Cod. 662020
Art. 104MINILUX

Pair of surface mounted photocells. Range 20 mt



Cod. 662030
Art. 104LUX

Pair of adjustable (15°) surface mounted photocells



Cod. 662044
Art. LINEAR

Pair of adjustable photocells (180°) with possibility of synchronized operating. Range 20 Mt



Cod. 681060
Art. COVER

Vandal-proof aluminium cover for art. LINEAR and LINEAR/B



Cod. 663060
Art. KYO

Aluminium vandal-proof keyswitch, flush mounted.



Cod. 663280
Art. DIGIRAD

Wireless keypad



Cod. 663270
Art. DIGINET

Hardwired keypad for BUS connections to MASTER devices of range DE@NET (NET24N, NET230N, MASTERNET)



Cod. 665000
Art. BLINDOS

Safety enclosure to place external unlocking device handle



Cod. 629290
Art. BAT

Rechargeable batteries kit for 24V operators, 12V - 1,3Ah, complete with wiring cables